

# BATINGA AMC Stool Formed Elements Analysis Report

Hospital Address:SM CITY CDO UPTOWN

Contact number:09061211260

Report No.:2606150003

Medical No.:

Test Time:2026.06.15 12:31:10

Pet Name:BADIDAY

Pet type:Canine

Gender:Female

Age:8 Year

Sample Type:Feces

Owner:

Color:Tan

Texture:Soft

Parameters	Result	Reference range	Negative	Positive
<b>01.Parasite Eggs</b>				
TXE# (Toxocara Egg)	0.00 Cells/LPF	0.00 - 0.00	-	
ANE# (Hookworm Egg)	0.00 Cells/LPF	0.00 - 0.00	-	
CEE# (Tapeworm Egg)	0.00 Cells/LPF	0.00 - 0.00	-	
DIP# (Dipylidium Tapeworm Egg)	0.00 Cells/LPF	0.00 - 0.00	-	
SPI# (Spirometra Tapeworm Egg)	0.00 Cells/LPF	0.00 - 0.00	-	
TtE# (Taenia Tapeworm Egg)	0.00 Cells/LPF	0.00 - 0.00	-	
TRE# (Brachylaime Egg)	0.00 Cells/LPF	0.00 - 0.00	-	
<b>02.Intestinal Protozoa</b>				
TRI# (Trichomonas)	0.00 Cells/LPF	0.00 - 0.00	-	
GIA# (Giardia)	0.00 Cells/LPF	0.00 - 0.00	-	
COD# (Isospora Oocyst)	0.00 Cells/LPF	0.00 - 0.00	-	
COD0# (Isospora Oocyst Stage 0)	0.00 Cells/LPF	0.00 - 0.00	-	
COD1# (Isospora Oocyst Stage 1)	0.00 Cells/LPF	0.00 - 0.00	-	
COD2# (Isospora Oocyst Stage 2)	0.00 Cells/LPF	0.00 - 0.00	-	
Tg# (Toxoplasma gondii)	0.00 Cells/LPF	0.00 - 0.00	-	
<b>03.Pathogens</b>				
COS# (Coccus)	129.76 Cells/HPF ↑	20.00 - 120.00		
BACI# (Bacillus)	2642.09 Cells/HPF ↑	80.00 - 2200.00		
C/B (Coccus-Bacillus Ratio)	0.05	0.01 - 0.15		
CAM# (Campylobacter)	0.00 Cells/HPF	0.00 - 4.50		
SFB# (Bacillus (spore-forming))	0.00 Cells/HPF	0.00 - 6.00		
SS1# (Serpentine Spirochaete)	0.00 Cells/HPF	0.00 - 0.00		
SS2# (Spirillum)	0.00 Cells/HPF	0.00 - 0.00		
YEA# (Yeast)	0.16 Cells/HPF	0.00 - 20.00		
<b>04.Cells</b>				
RBC# (Red Blood Cell)	0.03 Cells/HPF	0.00 - 1.00		
WBC# (White Blood Cell)	0.69 Cells/HPF	0.00 - 1.00		
EPC# (Epithelial Cell)	0.13 Cells/HPF	0.00 - 2.00		
<b>05.Digestive Products</b>				
STA# (Starch Granules)	0.00 Cells/HPF	0.00 - 2.00		
LFAT# (Lipid Droplets)	0.00 Cells/HPF	0.00 - 0.20		
PLA# (Plant Fiber)	0.00 Cells/HPF	0.00 - 0.10		
AF# (Muscle Fiber)	0.00 Cells/HPF	0.00 - 0.10		

Low Normal High



# BATINGA AMC Stool Formed Elements Analysis Report

Hospital Address:SM CITY CDO UPTOWN

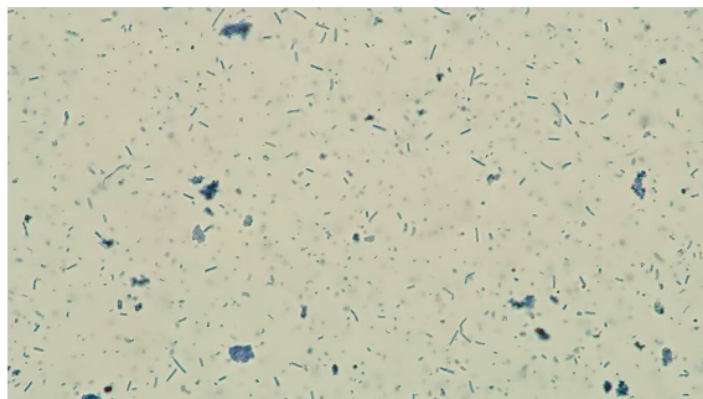
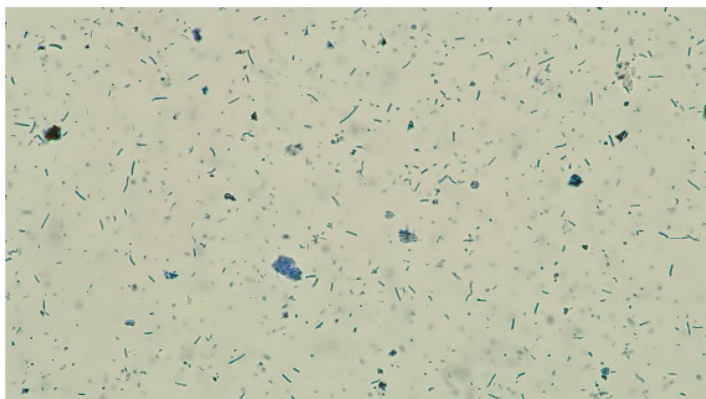
Contact number:09061211260

Report No.:2606150003

Pet Name:BADIDAY

Pet type:Canine

## Microbiota map



**COS#** 129.76 Cells/HPF



STD image

15um

**BACI#** 2642.09 Cells/HPF



STD image

15um

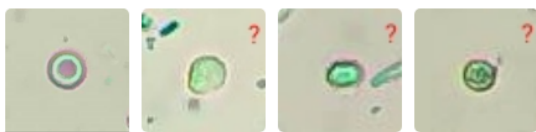
**YEA#** 0.16 Cells/HPF



STD image

15um

**RBC#** 0.03 Cells/HPF



STD image

15um

**WBC#** 0.69 Cells/HPF



STD image

15um

# BATINGA AMC Stool Formed Elements Analysis Report

Hospital Address:SM CITY CDO UPTOWN

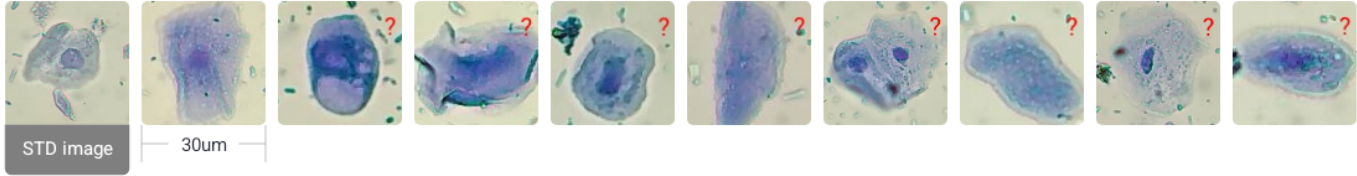
Contact number:09061211260

Report No.:2606150003

Pet Name:BADIDAY

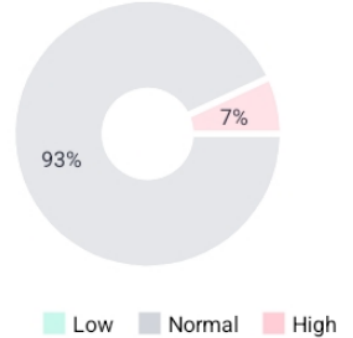
Pet type:Canine

EPC# 0.13 Cells/HPF



## Intestinal Dysbiosis

Basis for judgment:Both cocci and bacilli elevated suggest intestinal microecological imbalance, commonly seen in indigestion or mild enteritis, accompanied by symptoms like diarrhea and loose stools.



## COS# 129.76 Cells/HPF ↑ (20.00 - 120.00)

-Clinical indication:Indicates an imbalance in the gut microbiota, which may be related to indigestion or infection

-Basis for judgment:According to [1] and [3], an increase in cocci (COS#) is commonly seen in intestinal microecological disorders, related to diarrhea and indigestion, especially occurring after the use of antibiotics or during intestinal inflammation.

## BACI# 2642.09 Cells/HPF ↑ (80.00 - 2200.00)

-Clinical indication:Imbalance of intestinal flora indicates bacterial intestinal disorder

-Basis for judgment:According to [1] and [3], an increase in the number of bacilli is commonly seen in intestinal microecological imbalance, which may be related to indigestion or infection

## Possible diseases and basis for inference

Mild Intestinal Dysbiosis High

Simultaneous increase of COS# and BACI# directly reflects flora proportion disorder, consistent with early flora imbalance characteristics

Antibiotic-Associated Diarrhea Medium

Non-specific elevation of bacilli and cocci is common after recent antibiotic use, leading to destruction of intestinal flora

Chronic Nonspecific Enteritis Low

Commonly seen in persistent dysbiosis, but requires support from abnormal white blood cells or red blood cells

[1]Peregrine,A.S. Gastrointestinal Parasites in Small Animals [M/OL]. Merck Veterinary Manual, 2024 (9).

[2]Robertson L.J. Giardiasis in animals [M/OL]. Merck Veterinary Manual, 2025 (8).

[3]European Scientific Counsel Companion Animal Parasites (ESCCAP). ESCCAP guideline 06: control of intestinal protozoa in dogs and cats [M/OL]. European Scientific Committee on Parasitology of Companion Animals (ESCCAP), 2025 (3)